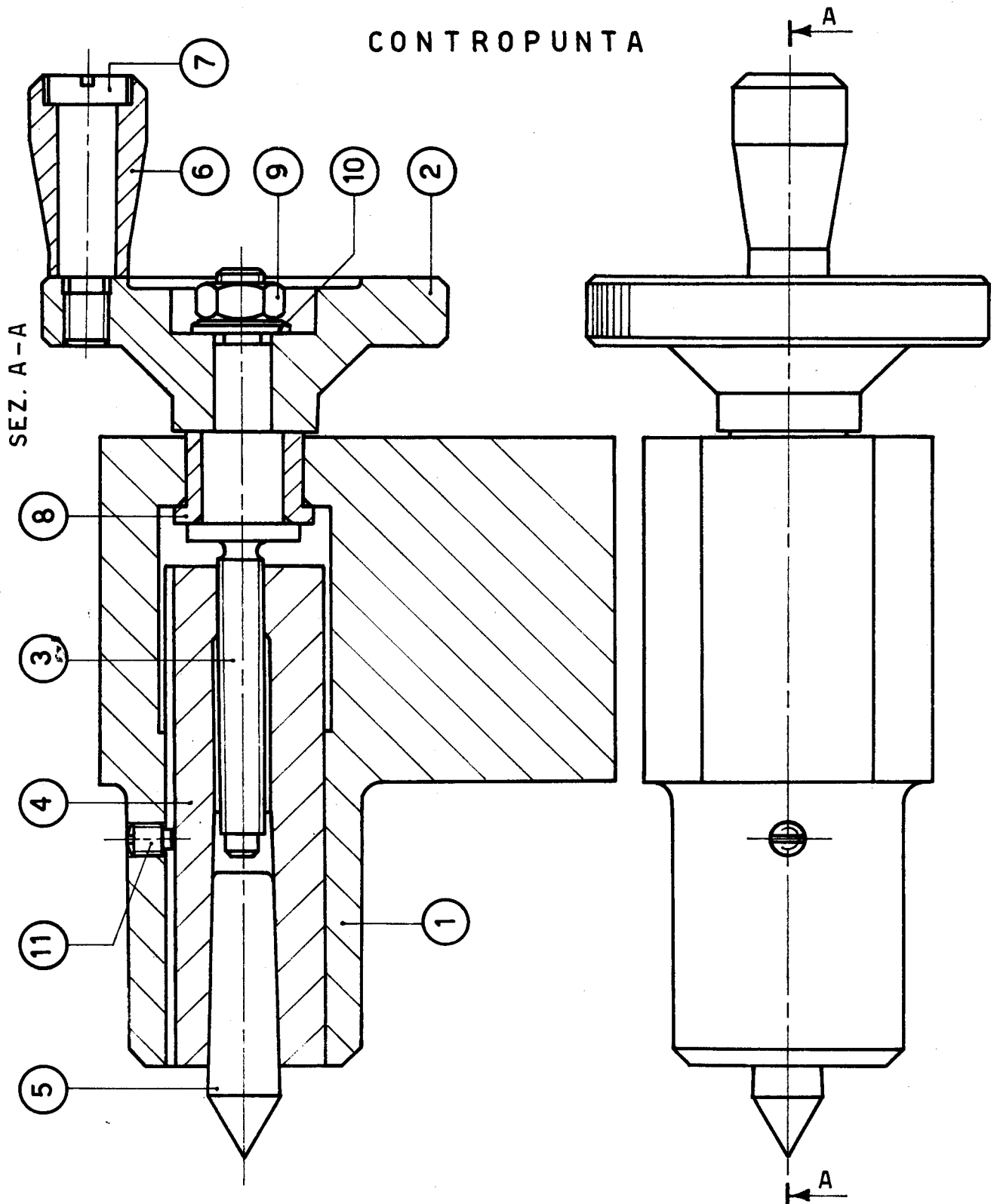


CONTROPUNTA



ELABORAZIONE BEMETEL

| 11   | GRANO 6x8 UNI 2388  | 1      |                | C 21      |      |
|------|---------------------|--------|----------------|-----------|------|
| 10   | ROSETTA 84 UNI 1734 | 1      |                | Fe 42     |      |
| 9    | DADO 8 UNI 207      | 1      |                | C 21      |      |
| POS. | DENOMINAZIONE       | QUANT. | DIMENS. GREZZO | MATERIALE | NOTE |

TOLLERANZE

TEMPO CONCESSO 24 ore

SCALA 1:1



ESERCIZIO  
PROPOSTO DA P.I BUTTIGLIENGO PIERO